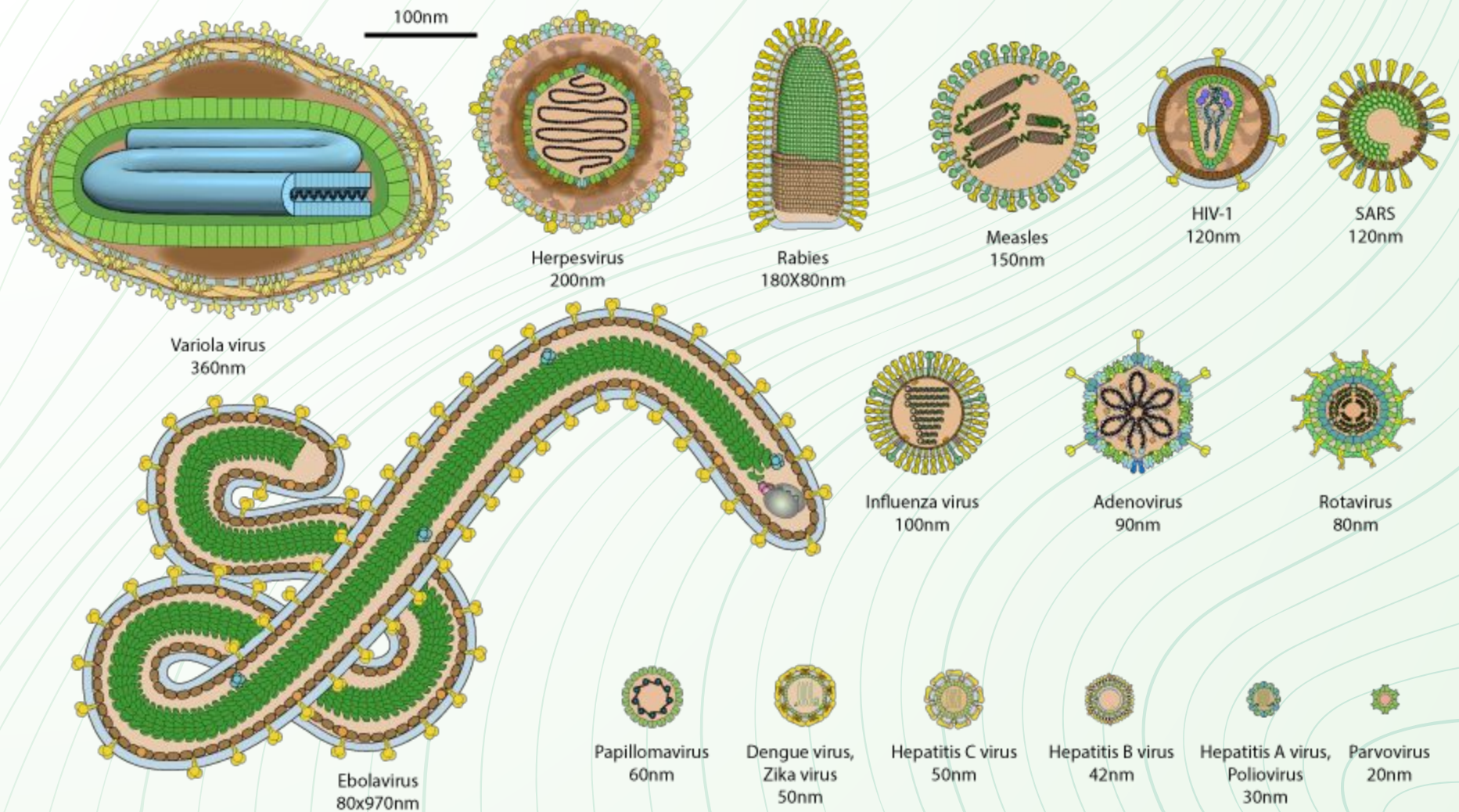


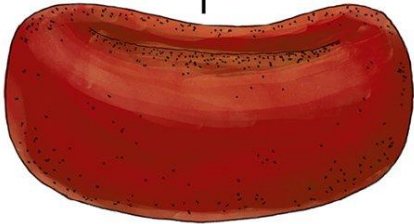
Virus

INFORMATION PÅ VILLOVÄGAR?

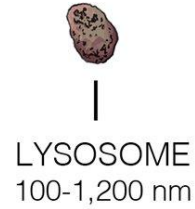
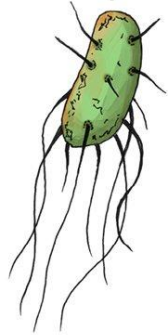
Kråka Larsen VFU 2025



RED BLOOD CELL
8,000 nm



E. COLI BACTERIUM
2,000 nm



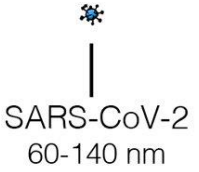
LYSOSOME
100-1,200 nm



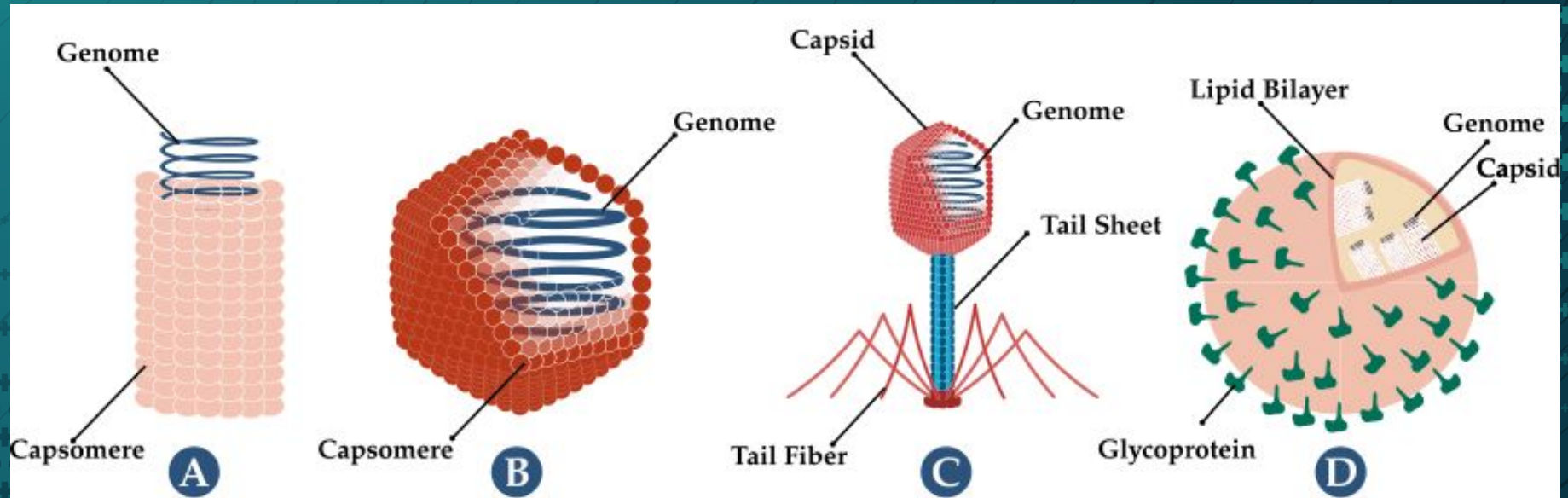
INFLUENZA
80-120 nm



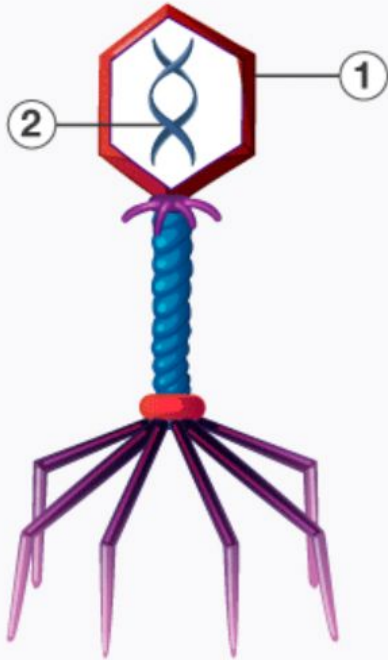
HIV
90-160 nm



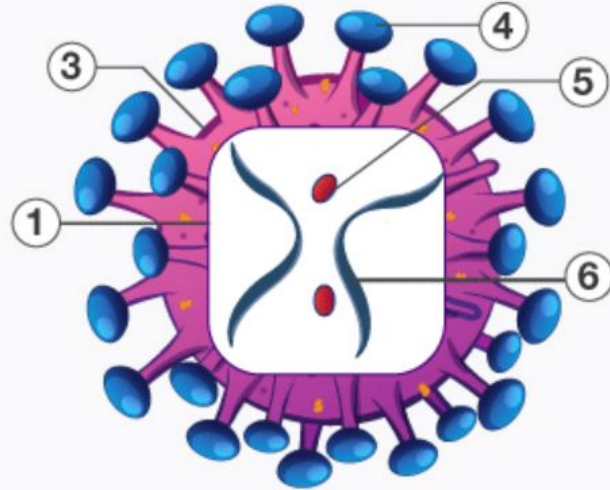
SARS-CoV-2
60-140 nm



VIRAL STRUCTURE

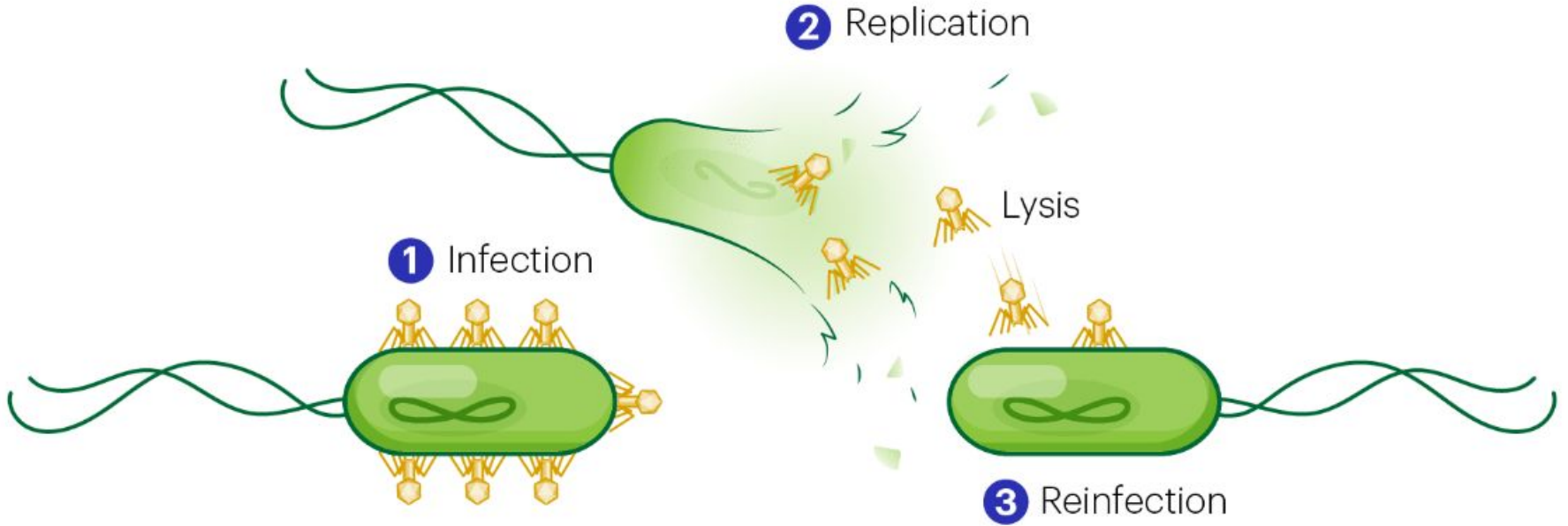


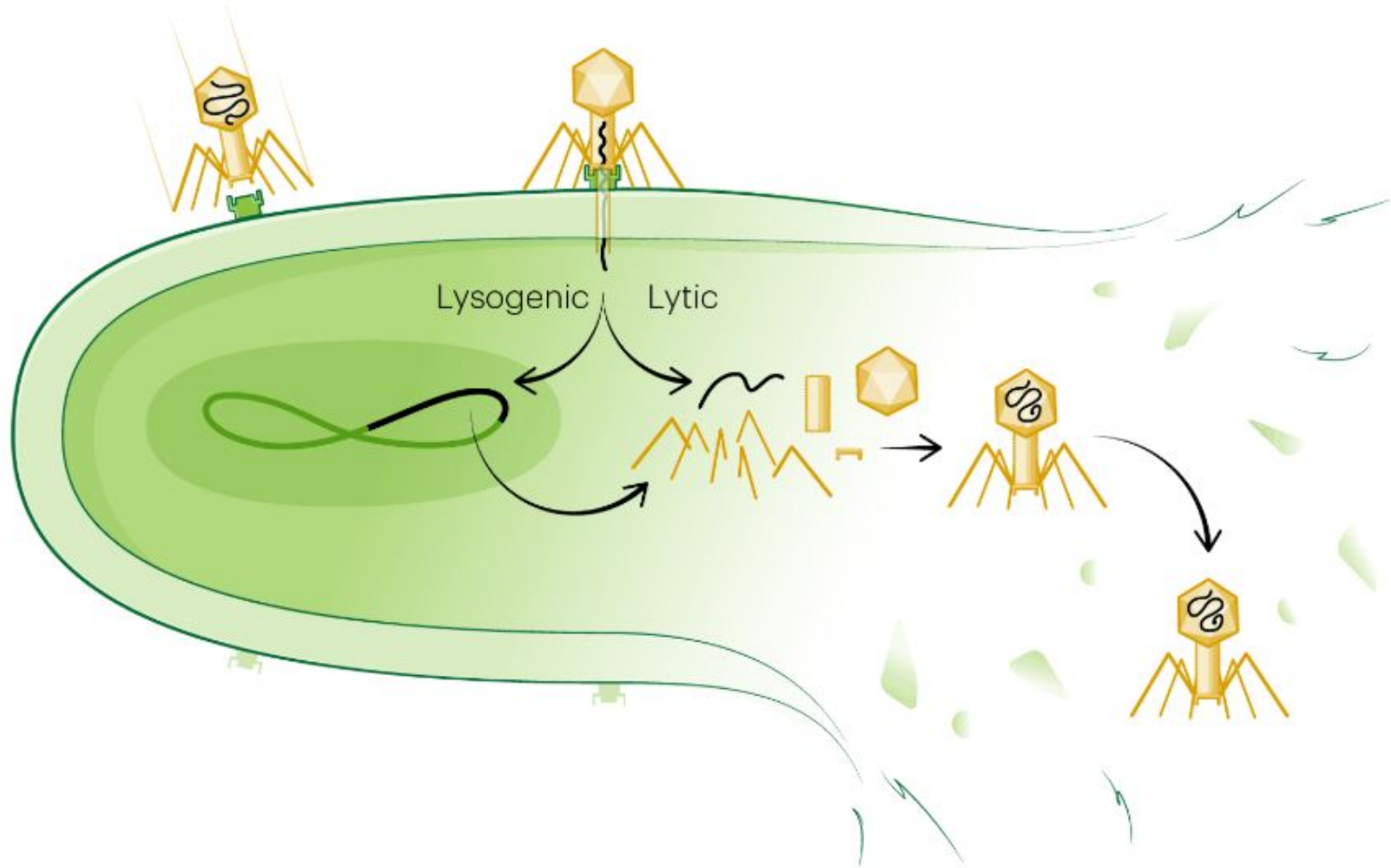
(a) Bacteriophage

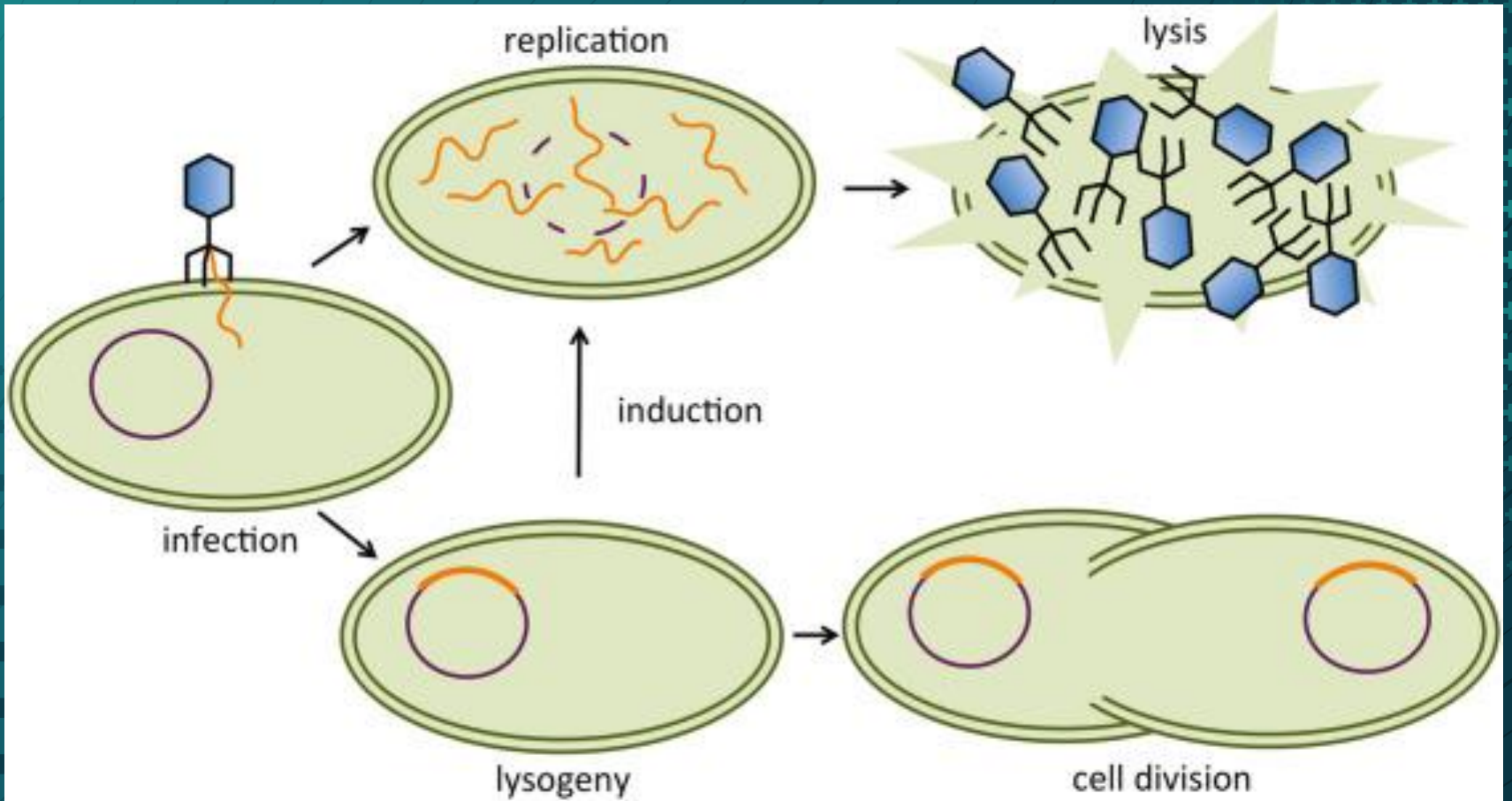


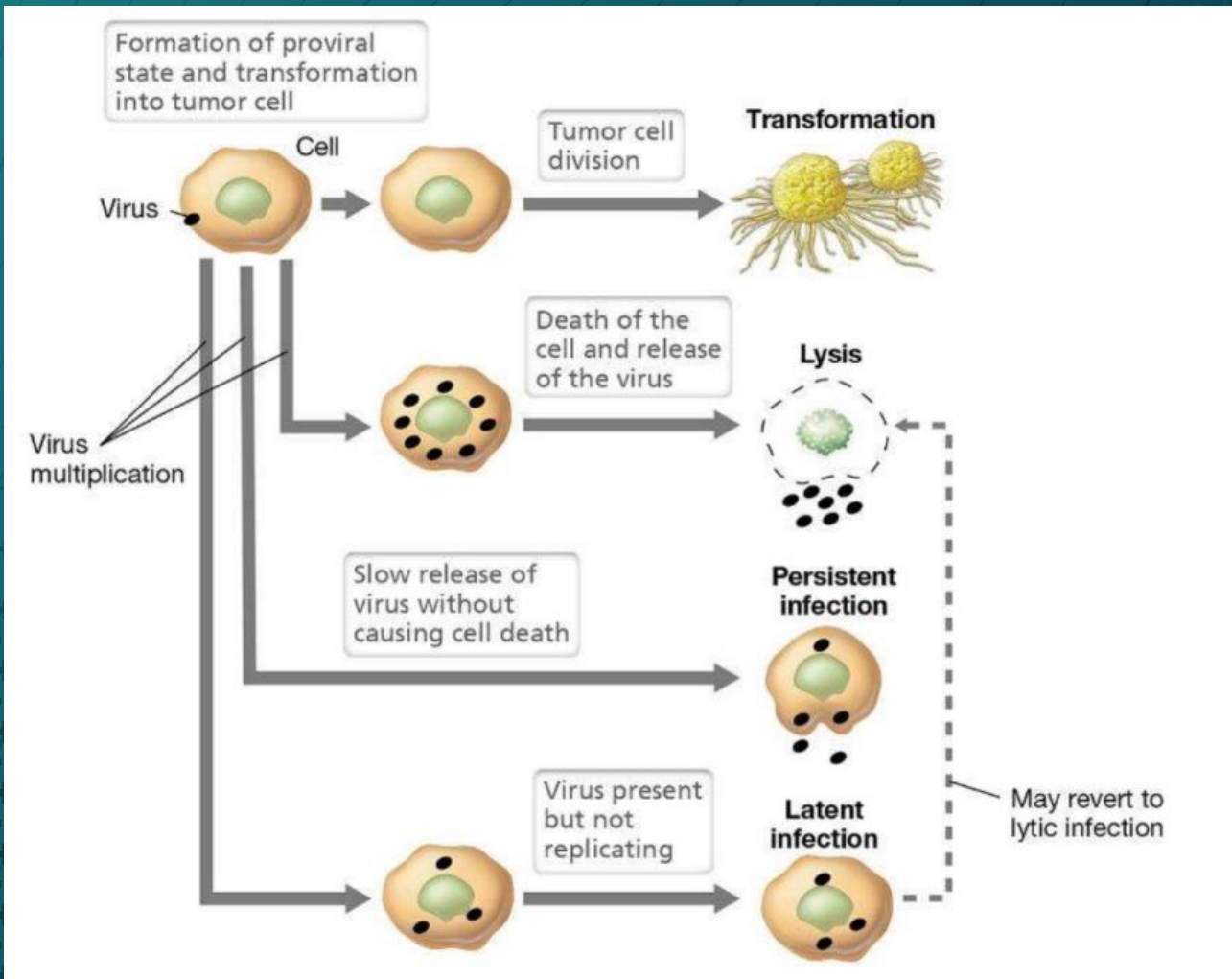
(b) Human Immunodeficiency Virus

- 1 Capsid | 2 DNA | 3 Envelop | 4 Envelop Protein | 5 Enzyme | 6 RNA









A

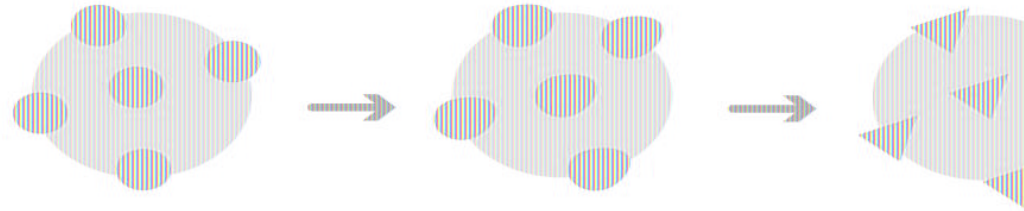
Pillage & Plunder

**B**

Batten down the Hatches

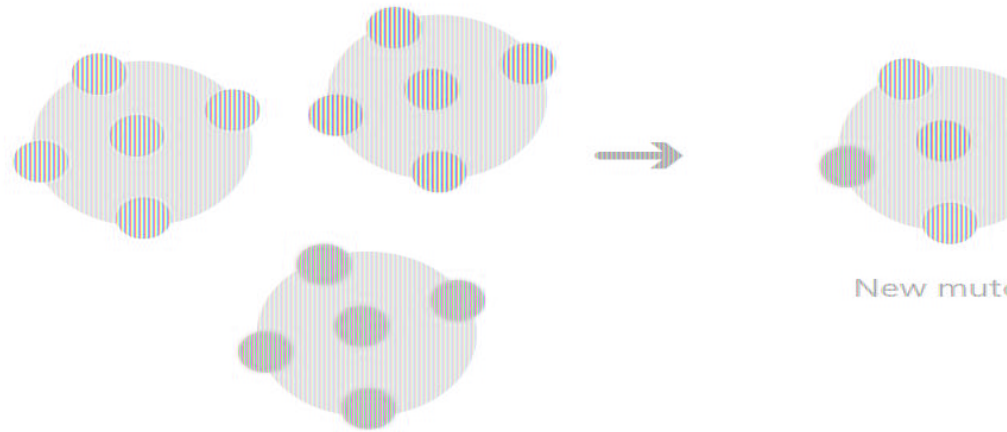


Antigenic Drift

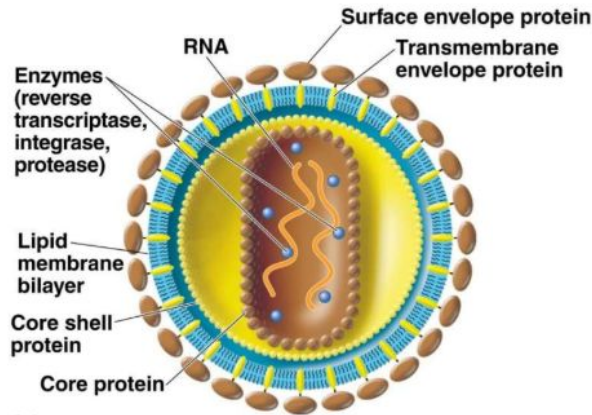


Small mutations accumulate over time

Antigenic Shift



New mutations

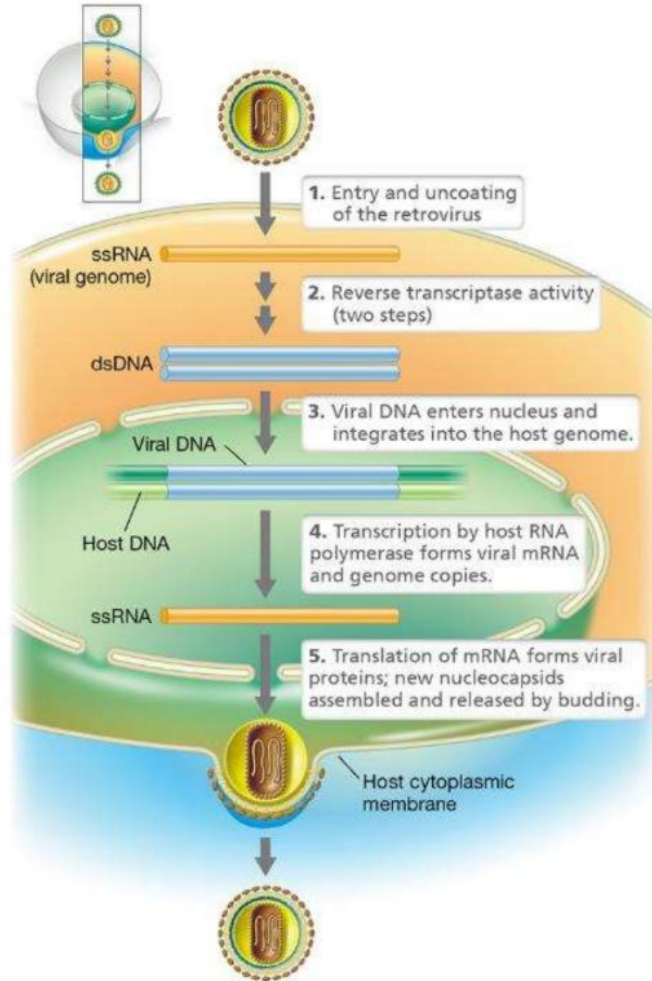


(a)



(b)

- gag* – strukturprotein
- pol* – omvänt transkriptas + integras
- env* – höljeprotein
- src* – tyrosinkinase (Rous sarcoma virus)

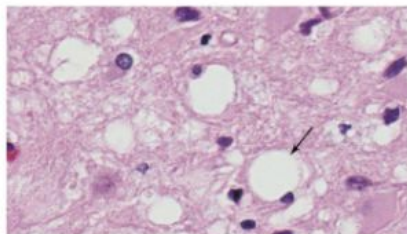
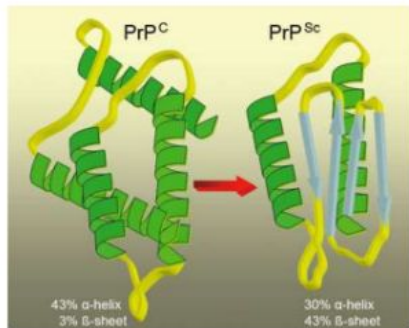




Rod Type Viroid Structure

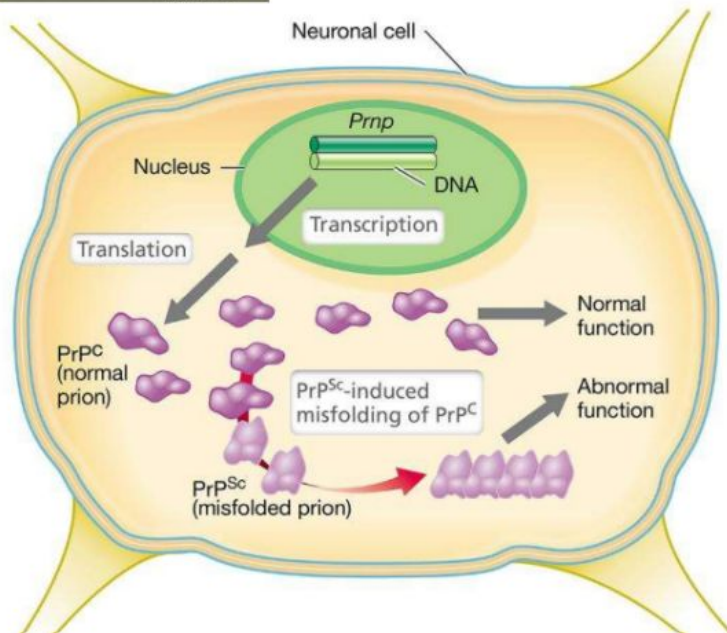


Branched Type Viroid Structure



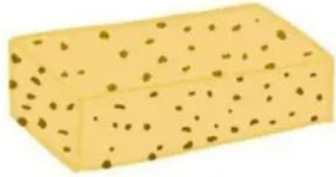
CDC/PHIL, Teresa Hammett

(a)



SPONGIFORM ENCEPHALOPATHY

SPONGE-LIKE



BRAIN TISSUE DEGENERATES



HEALTHY TISSUE → CYSTS



BRAIN LOOKS LIKE A SPONGE

BRAIN



DISEASE
PROCESS

CAUSE IS THE ACCUMULATION
OF MISFOLDED PROTEINS
CALLED PRIONS