

# Klassisk genetik

Kråka Larsen Bio 1 2025



*Linné.*



CAROLI LINNÆI

EQUITIS DE STELLA POLARI,  
ARCHIATRI REGII, MED. & BOTAN. PROFESS. UPSAL.;  
ACAD. UPSAL. HOLMENS. PETROPOL. BEROL. IMPER.  
LOND. MONSPEL. TOLOS. FLORENT. SOC.

**SYSTEMA  
NATURÆ**

PER  
*REGNA TRIA NATURÆ,*  
SECUNDUM  
CLASSES, ORDINES,  
GENERA, SPECIES,  
CUM  
*CHARACTERIBUS, DIFFERENTIIS,  
SYNONYMIS, LOCIS.*

**TOMUS I.**

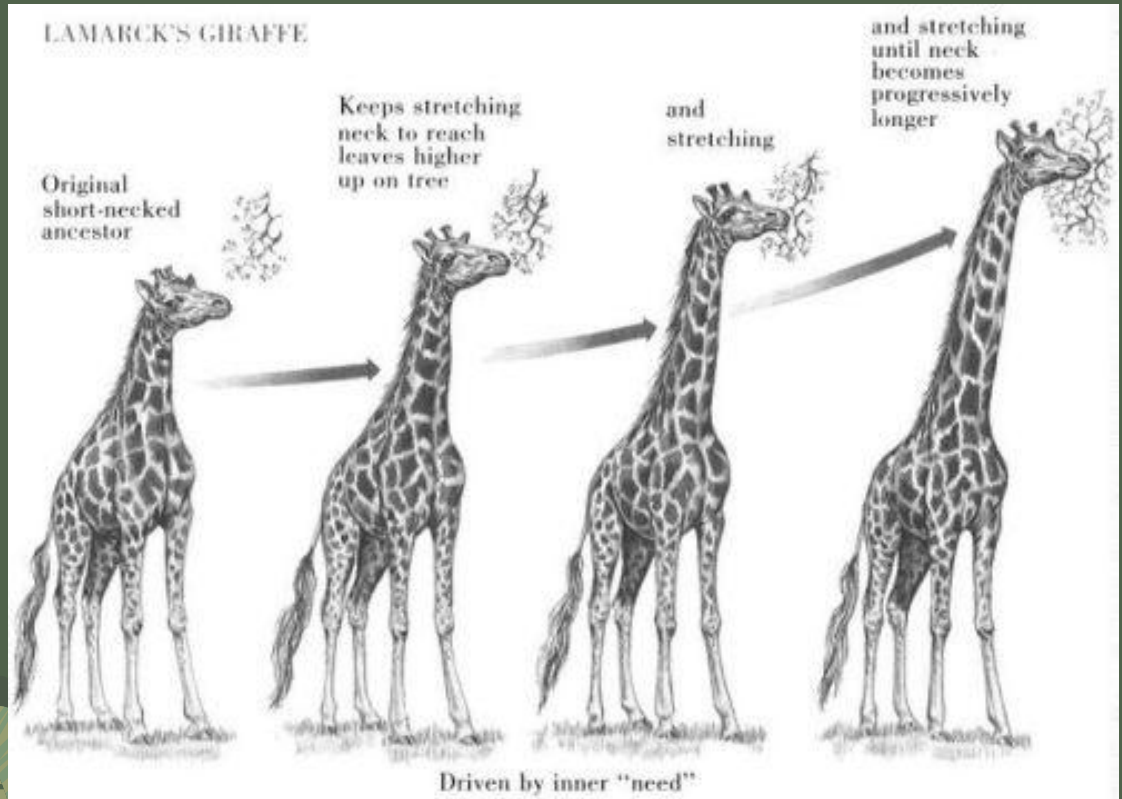
---

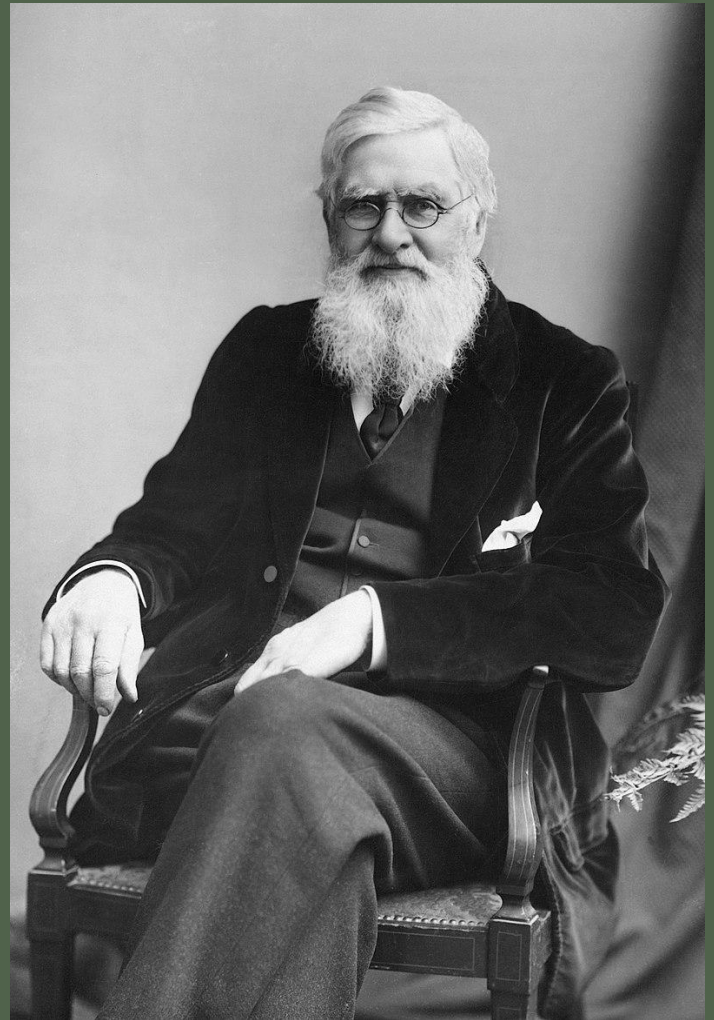
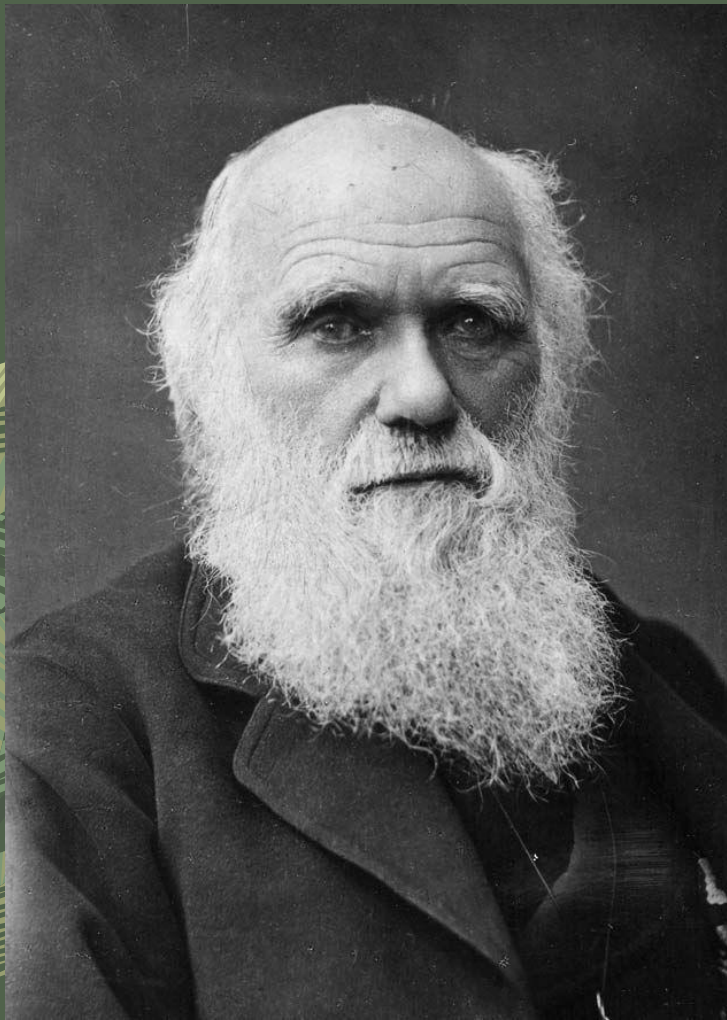
EDITIO DECIMA, REFORMATA.

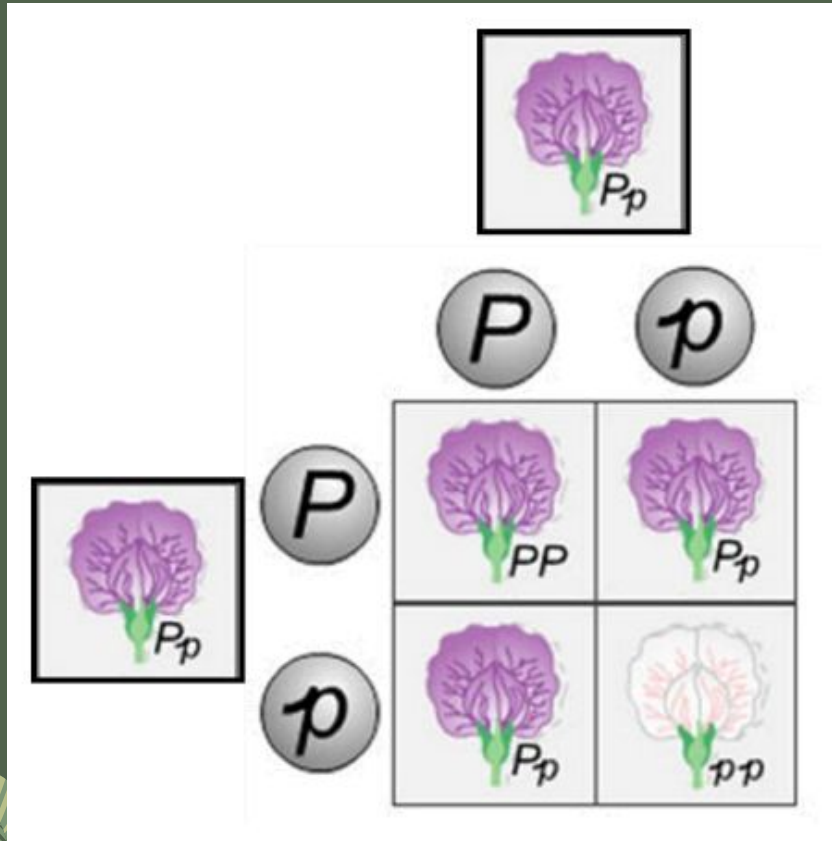
*Cum Privilegio Sæ R:æ M:tis Sveciæ.*

---

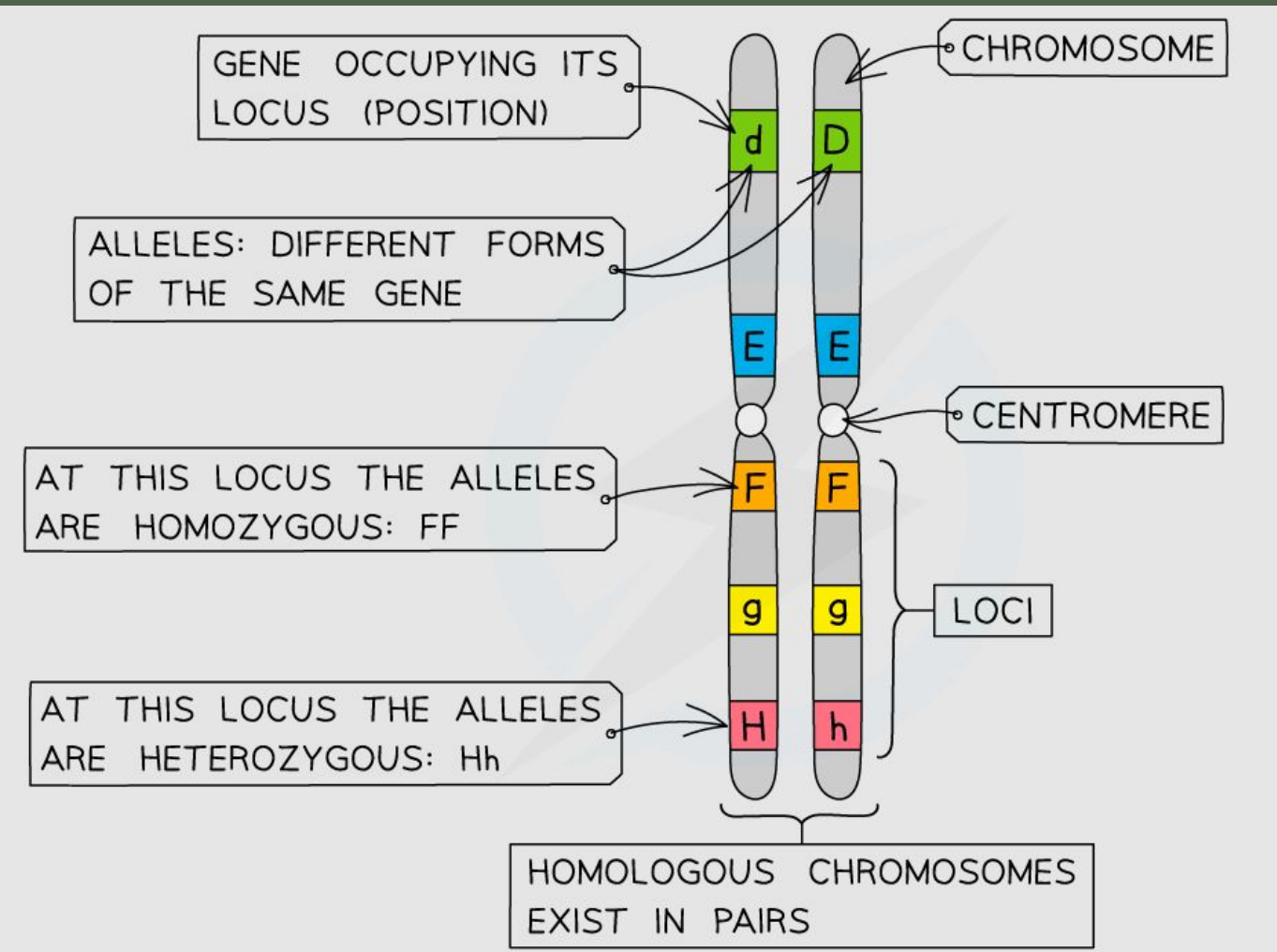
**HOLMIÆ,**  
IMPENSIS DIRECT. LAURENTII SALVII,  
1758.











GENE OCCUPYING ITS LOCUS (POSITION)

CHROMOSOME

ALLELES: DIFFERENT FORMS OF THE SAME GENE

CENTROMERE

AT THIS LOCUS THE ALLELES ARE HOMOZYGOUS: FF

LOCI

AT THIS LOCUS THE ALLELES ARE HETEROZYGOUS: Hh

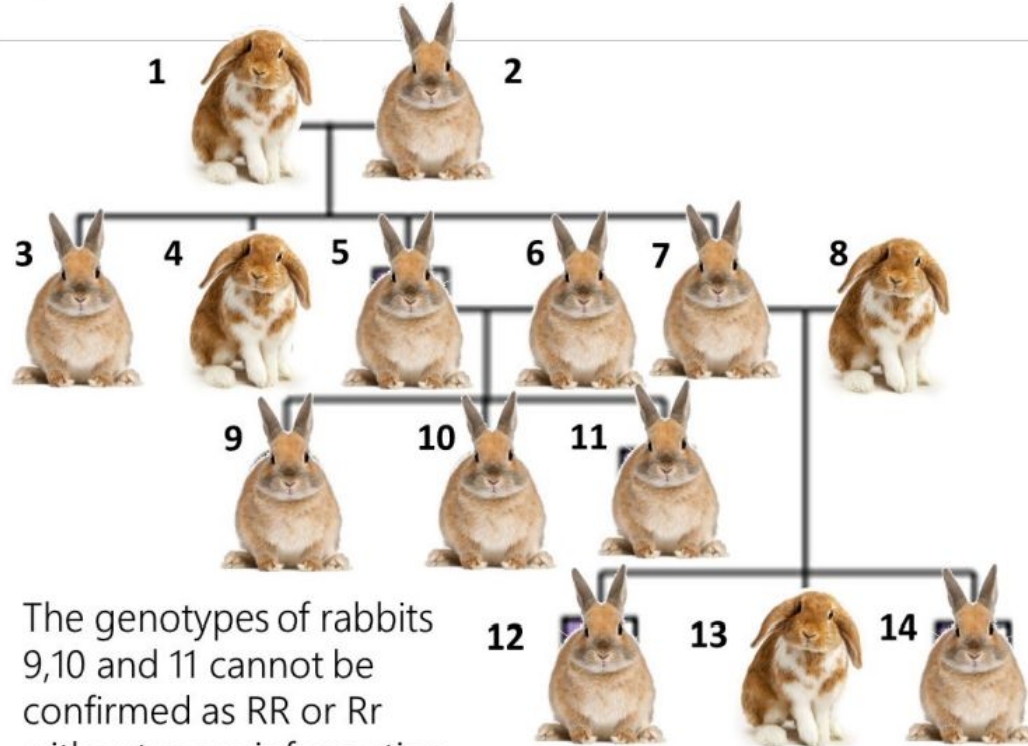
HOMOLOGOUS CHROMOSOMES EXIST IN PAIRS



Lop-eared  
**rr**



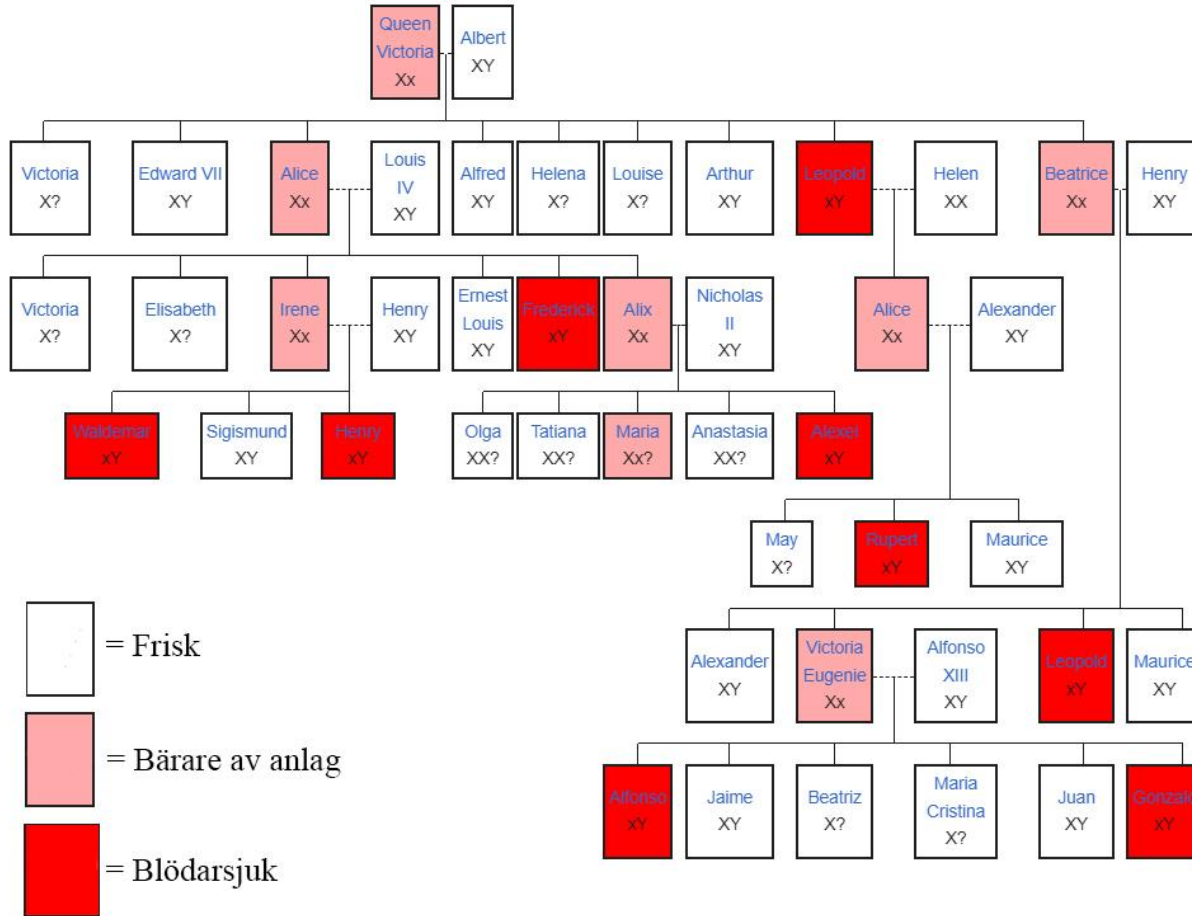
straight-eared  
**RR or Rr**







# Hemofili i Europeiska kungahuset



*Hesperosuchus agilis*

200 mya • US



*Sphenosuchus acutus*

195 mya • South Africa



*Protosuchus haughtoni*

200 - 190 mya • South Africa



*Theriosuchus pusillus*

145 - 140 mya • England



*Bernissartia fagesii*

145 - 125 mya • Belgium, France, Spain

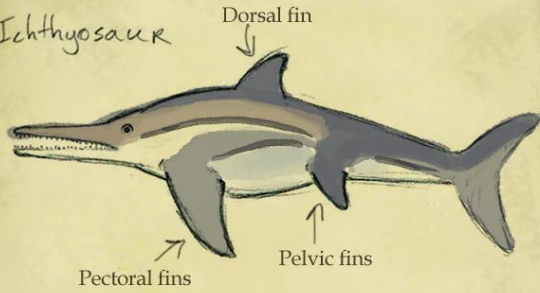


*Borealosuchus formidabilis*

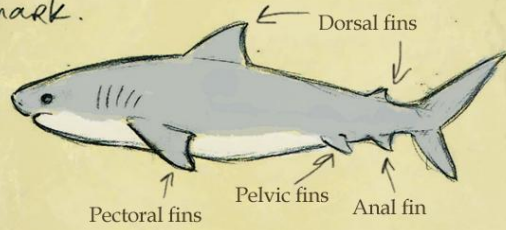
85 - 55 mya • US



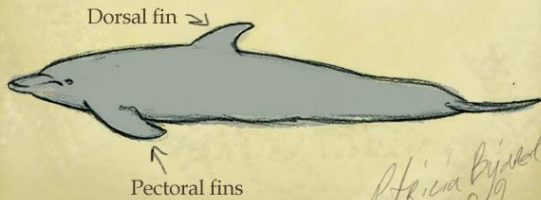
Ichthyosaur



Shark.



Dolphin



Patricia Bivell  
2019



**Humerus**

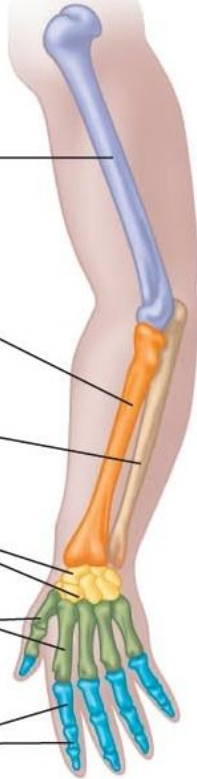
**Radius**

**Ulna**

**Carpals**

**Metacarpals**

**Phalanges**



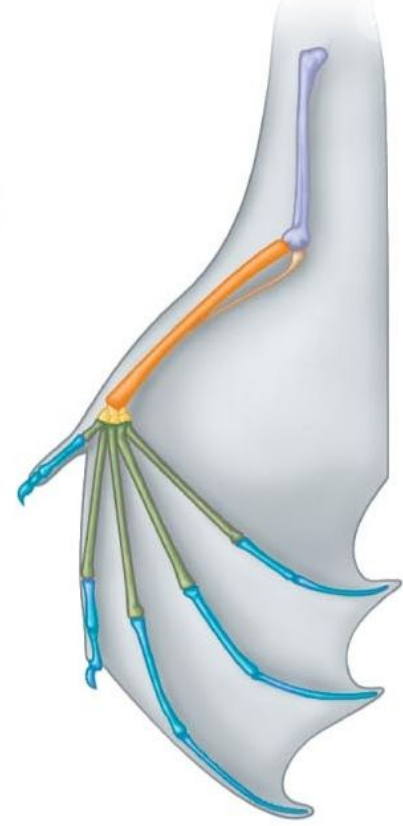
**Human**



**Cat**



**Whale**



**Bat**





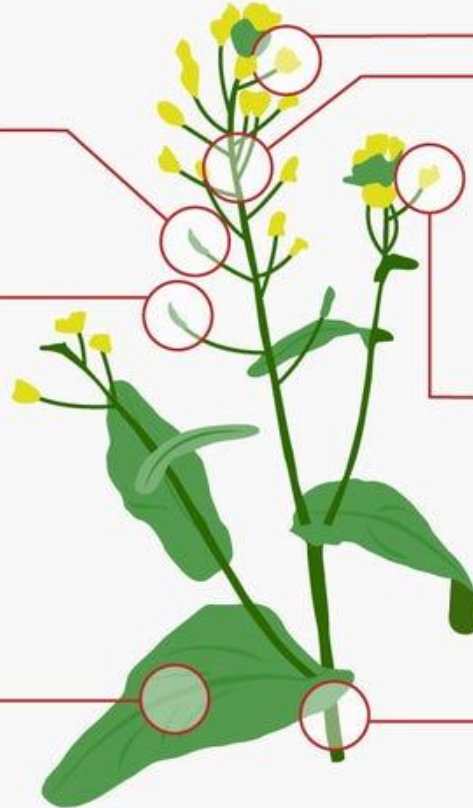




**Brussels sprouts**  
Lateral leaf buds



**Wild Mustard Plant**  
Brassica Oleracea



**Broccoli**  
Flower buds/stems



**Cabbage**  
Terminal leaf bud



**Cauliflower**  
Flower buds



**Kale**  
Leaves



**Kohlrabi**  
Stem



# Vildvetets släkting banar vägen



Lennart Olsson, professor i hållbarhetsvetenskap vid Lunds universitet, i ett försöksfält med kernza utanför Alnarp. Foto: Johan Nilsson/TT

